

Lane Plating Works

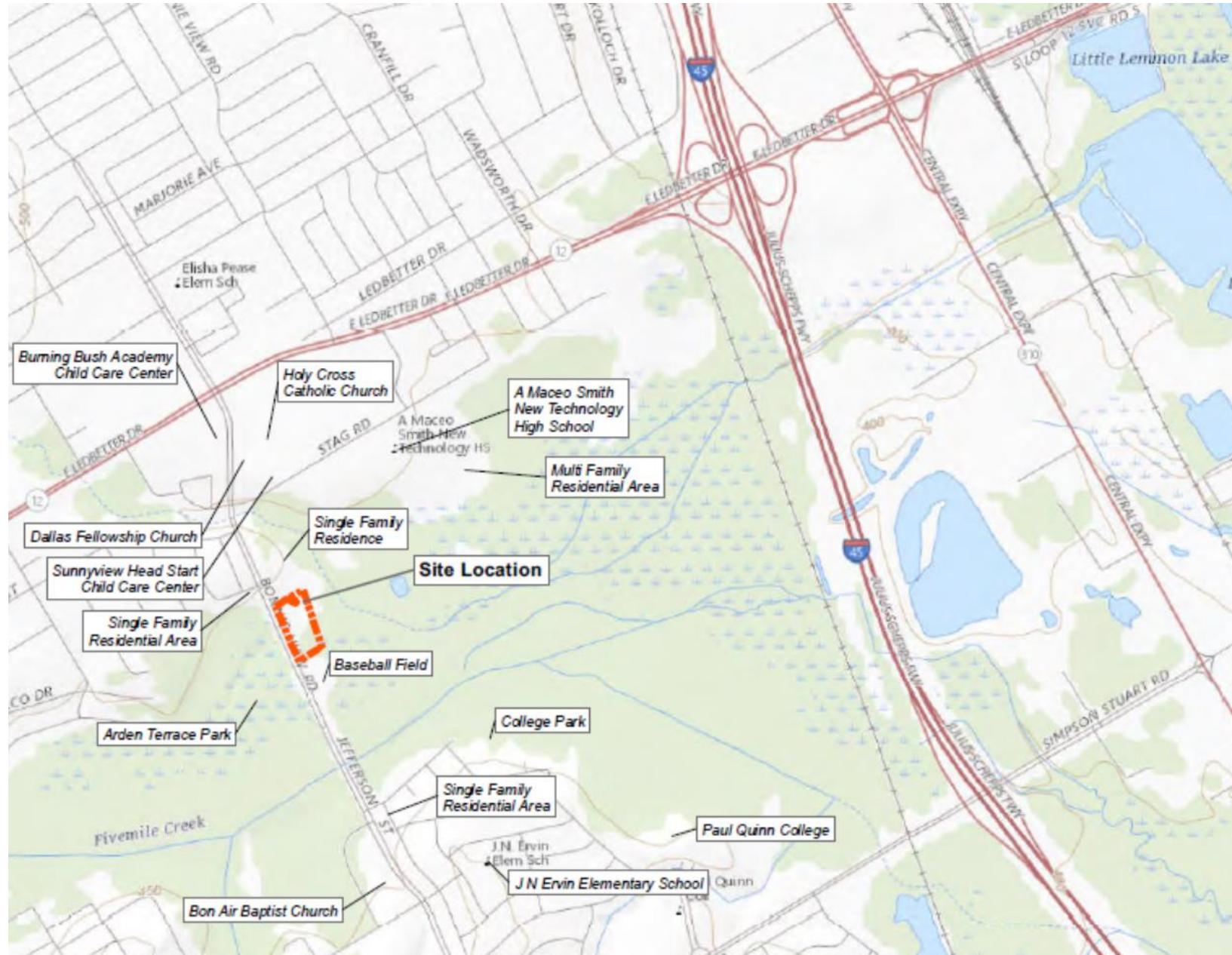


**Community Meeting
January 30, 2020**

U.S. EPA Region 6

► Lane Plating Superfund Site

5322 Bonnie View Road in Dallas, TX.



Previous EPA Actions

- ▶ 2016 -EPA conducted an Initial Cleanup. Over 188,000 lbs of waste material was removed.
- ▶ 2018 - EPA added the Site to the National Priorities List to complete the long-term cleanup.
- ▶ 2019 - EPA begins studies for long-term cleanup.

Recent EPA Actions

- ▶ **November 2018- Public Meeting**
- ▶ **March 2019- Community Meeting hosted by Council Member Atkins**
- ▶ **May 2019 – On-Site Sampling**
- ▶ **June 2019 – Upgrade Fencing Around the Site**
- ▶ **November 2019- Preliminary Data Report**
- ▶ **January 2020- On-Site Sampling.**



Priorities

- ▶ **Ensure no current human exposure**
 - Contact with site soils.
 - Contact with surface water.
 - Consumption of groundwater.

- ▶ **Develop long-term cleanup plans**

- ▶ **Engage the community**

- ▶ **Implement the cleanup**

First Round of Sampling (May 2019)

- ▶ **Install 3 Groundwater Monitoring Wells and Sample 2 Existing Wells-**
 - Determine depth of groundwater and direction of flow
 - Evaluate a more complete list of contaminants
 - Determine the need for additional sampling
- ▶ **10 Soil Boring Locations**
 - Determine depth of soil contamination
 - Sample in areas where surface water runoff was observed
- ▶ **20 Sediment and Surface Water Sample Locations.**
 - Evaluate possible impact from surface water runoff

U.S EPA Region 6



Residential Screening Level Exceedances in Soil for metals



Legend

Screening Level Exceedances

- Sample exceeds Human Health Residential Screening Level
- Sample below Human Health Residential Screening Level

Fenceline

- ✂ Barbed Wire Fence - fair to poor
- ✂ Chainlink
- Gate

Upgrades to Fence



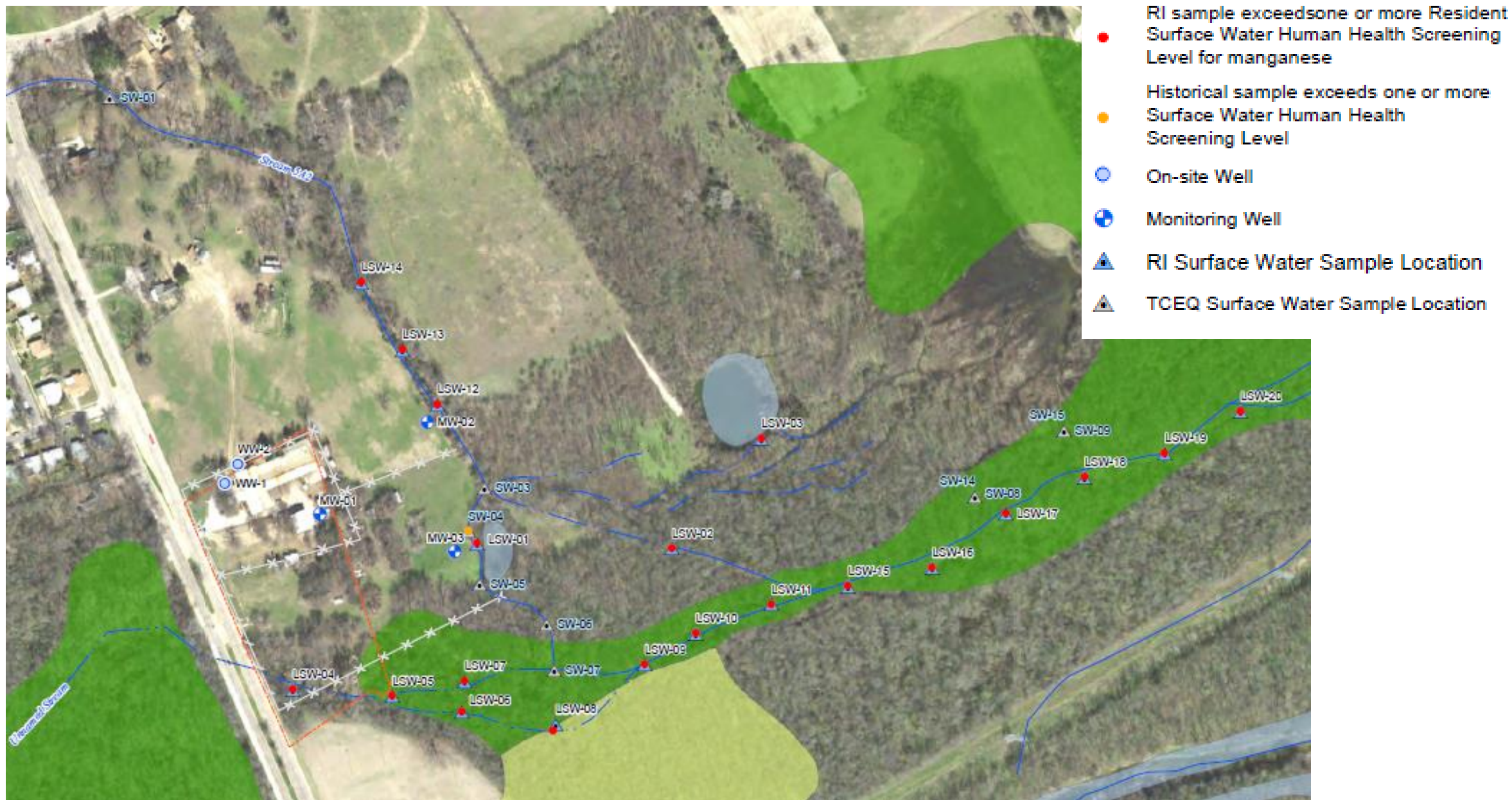
U.S. EPA Region 6



Sediment Screening Level Exceedances for Metals.



Surface Water Screening Level Exceedances for Total Metals



Phase Two Sampling 2020 (Jan 13 – Feb 3)

▶ Groundwater

- Install and Sample 10 New Monitoring Wells.
- Collect samples from 5 existing wells

▶ Soil

- 6 New Soil Boring Locations
- Sample Soil at 10 Monitoring Well Locations
- 15 Surface Soil locations,
- 8 Soil Background locations

▶ Sediment and Surface Water

- 2 sediment and surface water locations
- 8 surface water and sediment background locations

What is Next?

- ▶ **Complete Field work-** Field work started on January 13 will be complete first week of February.
- ▶ **Risk Assessment- RI Reports-** August 2020
- ▶ **Feasibility Study (FS)-** Study to evaluate methods of cleaning up the site.
- ▶ **Proposed Plan-** End of 2021 or early 2022

EPA CONTACTS

- ▶ Kenneth Shewmake - Superfund RPM
shewmake.Kenneth@epa.gov
- ▶ Lauren Poulos- Superfund RPM
poulos.lauren@epa.gov
- ▶ Edward Mekeel - Community Involvement Coord.,
mekeel.edward@epa.gov
- ▶ www.epa.gov/superfund/lane-plating.gov

